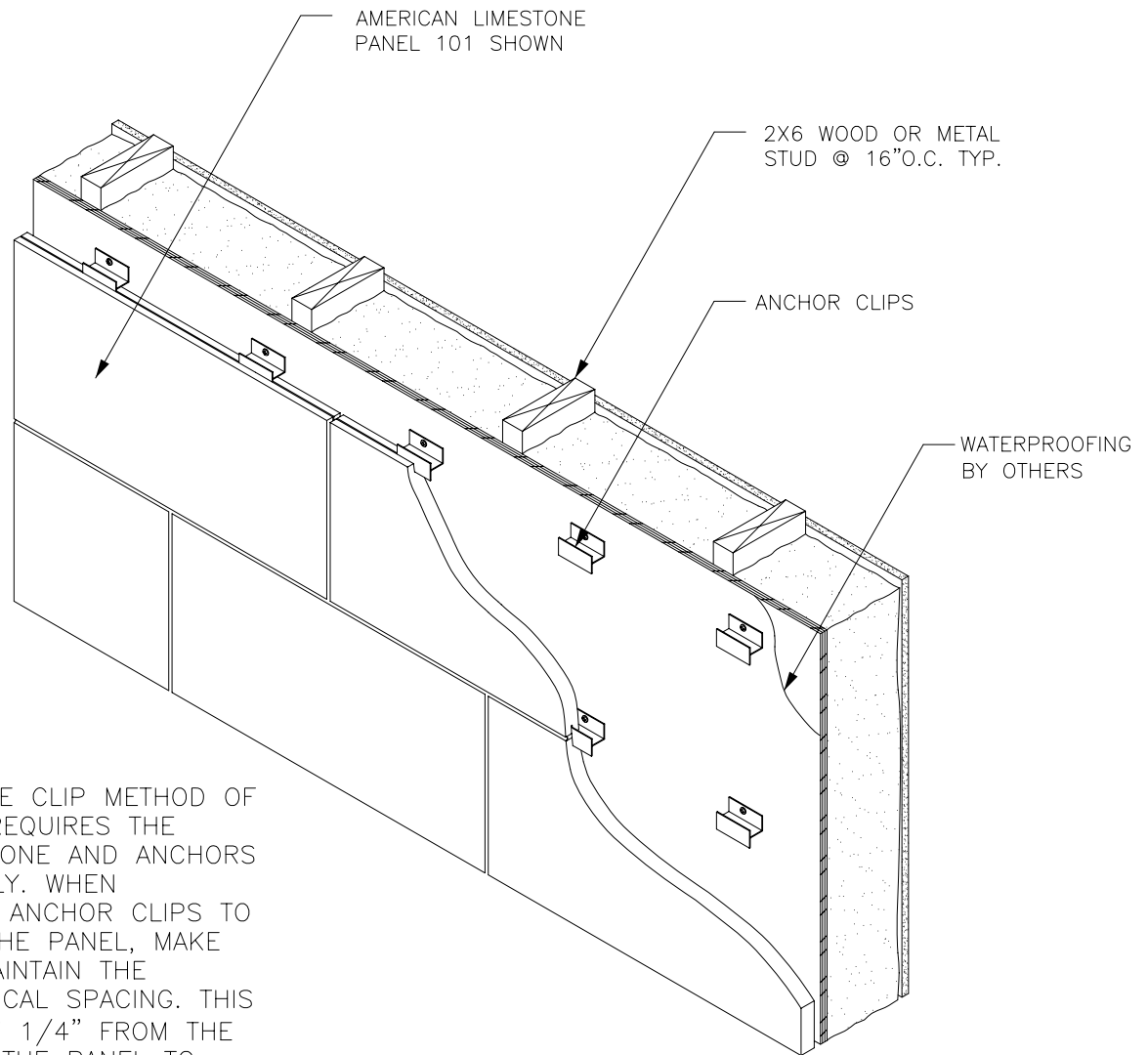


CLIP ANCHOR INSTALLATION

IN MOST INSTANCES, CLIP ANCHOR INSTALLATION REQUIRES (2) ANCHOR "CLIPS" PER PANEL. ANCHOR CLIP LENGTH, QUANTITY AND FASTENER REQUIREMENTS SHOULD BE CONFIRMED USING THE ANCHOR LOADING TABLES IN THE ALC SOLUTION MANUAL (SEE P.3.1.3 AND 3.1.3A) OR PER AN ENGINEER'S RECOMMENDATIONS.

HOLES FOR THE FASTENERS SHOULD BE DRILLED IN THE CLIP ANCHORS CENTERED IN THE "V" GROOVE PROVIDED. TYPICALLY, (2) CLIP ANCHORS PER PANEL ARE UTILIZED IN EITHER A STACK BOND OR RUNNING BOND PATTERN. ANCHORS ARE TO BE SPACED AT QUARTER POINTS (I.E. 6" - 12" - 6").

MAKE CERTAIN THAT ALL CLIP ANCHORS ARE TRUE AND LEVEL, AND THAT ALL ANCHORS ARE VERTICALLY PLUMB.



COMMONLY, THE CLIP METHOD OF INSTALLATION REQUIRES THE SETTING OF STONE AND ANCHORS SIMULTANEOUSLY. WHEN SECURING THE ANCHOR CLIPS TO THE TOP OF THE PANEL, MAKE CERTAIN TO MAINTAIN THE CORRECT VERTICAL SPACING. THIS SHOULD ALLOW 1/4" FROM THE TOP EDGE OF THE PANEL TO THE TOP OF THE ANCHOR WEB (3/16" TO THE BOTTOM OF THE WEB).

AMERICAN LIMESTONE COMPANY
A TEXAS CORPORATION
WWW.AMERICANLIMESTONE.COM
INFO@AMERICANLIMESTONE.COM

CLIP ANCHOR INSTALLATION

3.2.3