

# INSTALLATION INSTRUCTIONS

# SUPPLIES AND RECOMMENDED TOOLS

## SUPPLIES

### FASTENERS

#12 STAINLESS STEEL FASTENERS AS REQUIRED  
FOR PROPER SUBSTRAT ATTACHMENT

### SHIMS

1/16", 1/8" AND 1/4" HORSESHOE SHIMS

### SPACERS

1/4" HORSESHOE SHIMS

### SILICONE JOINT SEALANT

SUCH AS DOW CORNING 790  
OR  
PORTLAND-BASED GROUT

### OPTIONAL:

GREASELESS LUBRICANT SUCH AS LPS 1

## RECOMMENDED TOOLS

### LAYOUT:

SQUARES, LEVELS, TAPE MEASURES, CHALK AND STRING LINES,  
MISCELLANEOUS HAND TOOLS

### ATTACHEMENT OF ANCHORS:

3/8" DRILL WITH ASSORTED BITS (1/4"+) AND PHILLIPS DRIVER HEADS

### CUTTING ANCHORS:

ELECTRIC "CHOP SAW" OR EQUIVALENT

### CUTTING PANELS AND KERFS:

CIRCULAR SAW WITH DIAMOND MASONRY BLADE OR WET MASONRY SAW

### DRESSING AND CLEANING STONE:

60 GRIT WET-DRY SANDPAPER, STIFF BRISTLE BRUSH AND CLEAN WATER  
AND NON-ACIDIC LIGHT DETERGENT IF DESIRED

### CAULKING OR GROUTING JOINTS:

STANDARD CAULKING OR GROUTING TOOLS

**AMERICAN LIMESTONE COMPANY**

A TEXAS CORPORATION  
WWW.AMERICANLIMESTONE.COM  
INFO@AMERICANLIMESTONE.COM

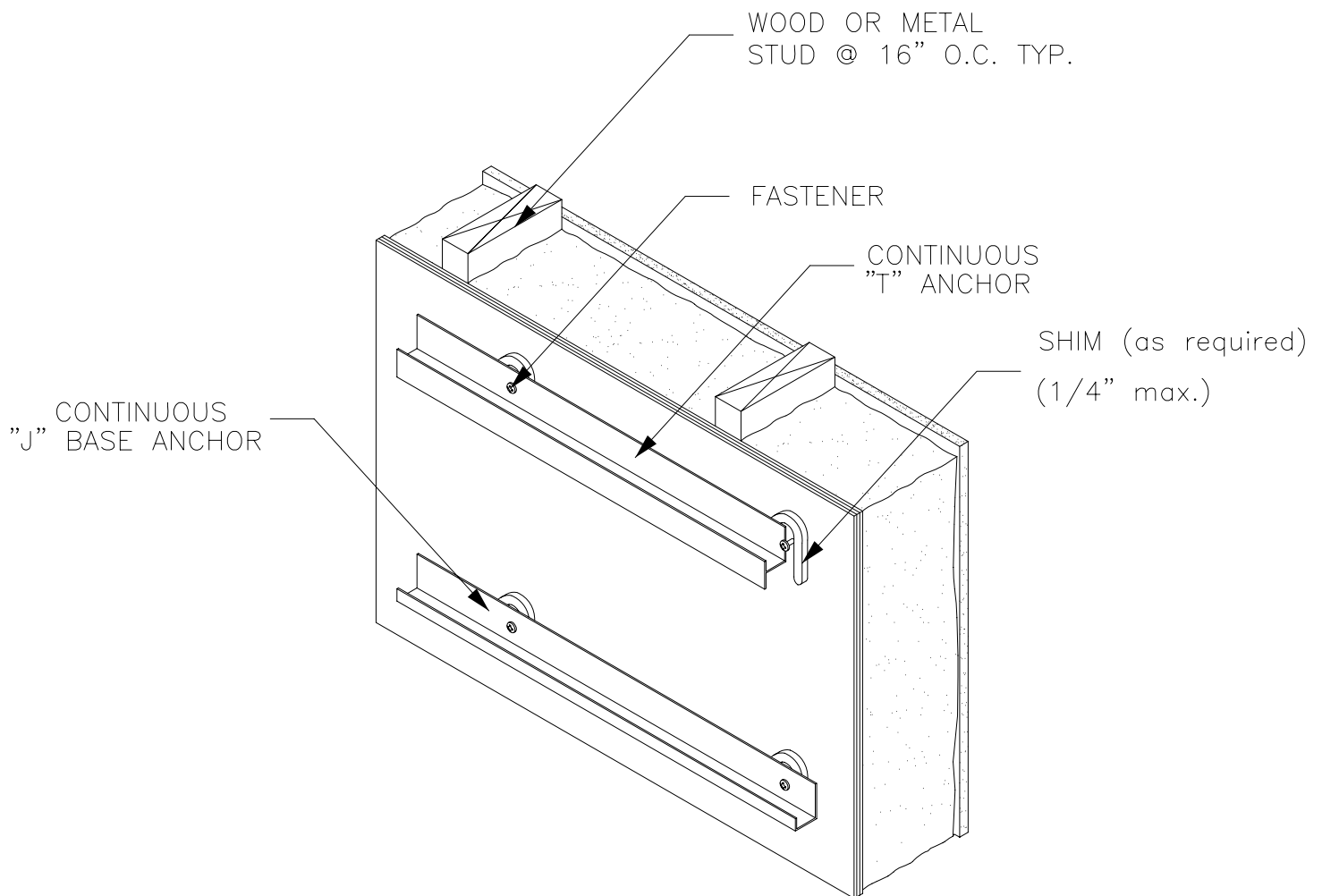
INSTALLATION – SUPPLIES & RECOMMENDED TOOLS

**3.2.1**

# CONTINUOUS BASE ANCHOR INSTALLATION

IN USING EITHER THE CLIP OR CONTINUOUS ANCHOR INSTALLATION METHOD, THE BASE OR BOTTOM "J" ANCHOR (OR "RAIL") TYPICALLY RUNS CONTINUOUSLY ACROSS THE BASE OF THE ELEVATION (SEE "CONTINUOUS ANCHOR INSTALLATION" ON P.3.2.4-5).

FASTENER HOLES SHOULD BE DRILLED NO MORE THAN 16" OC AND CENTERED IN THE "V" GROOVE PROVIDED. FASTENER TYPE AND REQUIREMENTS SHOULD BE CONFIRMED USING THE ANCHOR LOADING TABLES IN THE ALC SOLUTION MANUAL (SEE P.3.1.3 AND 3.1.3A) OR PER AN ENGINEER'S RECOMMENDATIONS.



SHIMS OR SPACERS ARE USED BETWEEN THE WALL SURFACE AND ANCHOR. THESE SHIMS ARE TO BE LOCATED AT ALL FASTENERS TO PROVIDE A CONTINUOUS STRAIGHT PLANE AND TO ACCOMMODATE ANY DEVIATION IN THE FACE OF THE SUBSTRATE.

MAKE CERTAIN THAT ANCHORS ARE TRUE AND LEVEL, AND THAT ALL ANCHORS ARE VERTICALLY PLUMB.

**AMERICAN LIMESTONE COMPANY**  
A TEXAS CORPORATION  
WWW.AMERICANLIMESTONE.COM  
INFO@AMERICANLIMESTONE.COM

CONTINUOUS BASE ANCHOR INSTALLATION

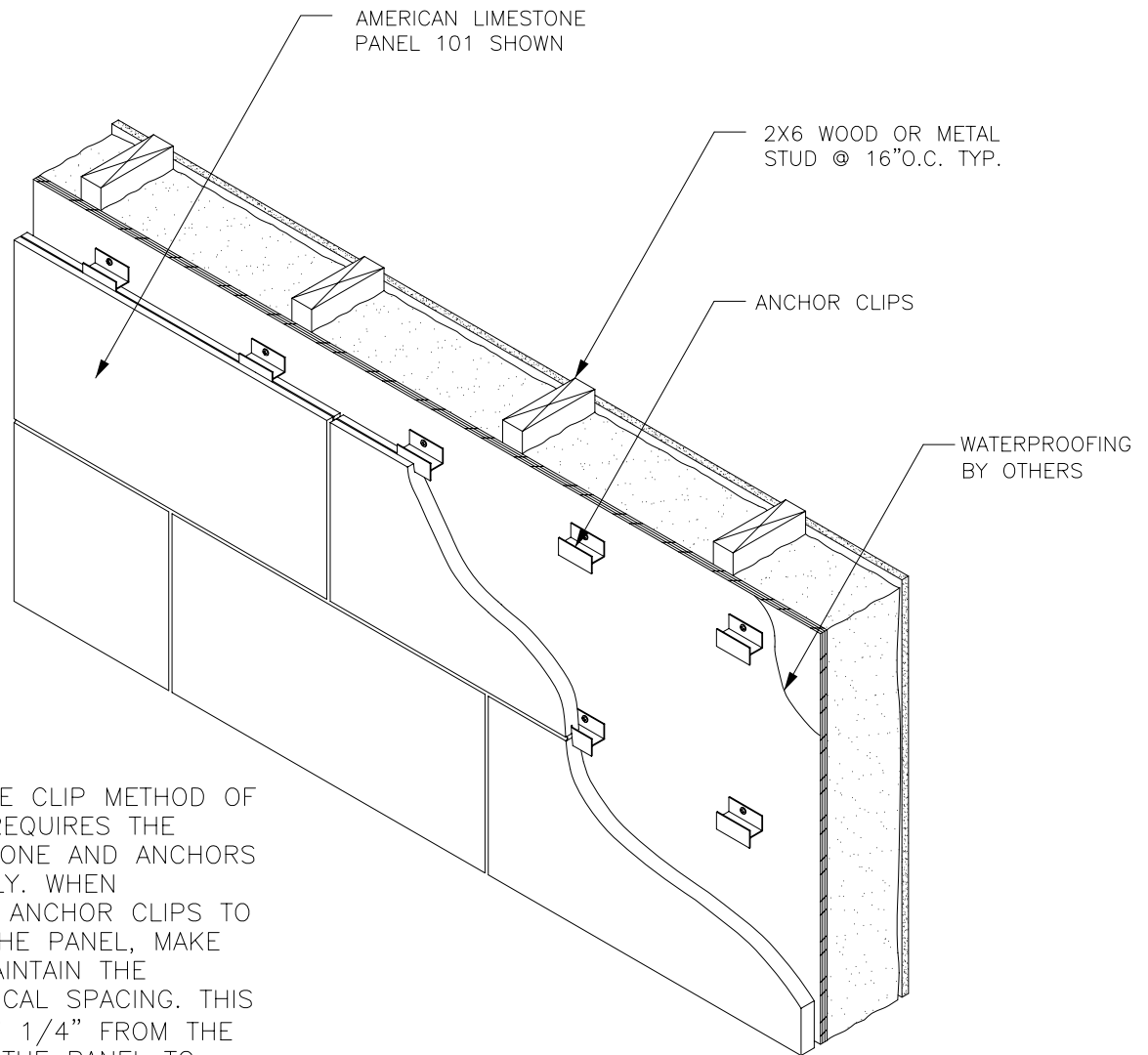
3.2.2

# CLIP ANCHOR INSTALLATION

IN MOST INSTANCES, CLIP ANCHOR INSTALLATION REQUIRES (2) ANCHOR "CLIPS" PER PANEL. ANCHOR CLIP LENGTH, QUANTITY AND FASTENER REQUIREMENTS SHOULD BE CONFIRMED USING THE ANCHOR LOADING TABLES IN THE ALC SOLUTION MANUAL (SEE P.3.1.3 AND 3.1.3A) OR PER AN ENGINEER'S RECOMMENDATIONS.

HOLES FOR THE FASTENERS SHOULD BE DRILLED IN THE CLIP ANCHORS CENTERED IN THE "V" GROOVE PROVIDED. TYPICALLY, (2) CLIP ANCHORS PER PANEL ARE UTILIZED IN EITHER A STACK BOND OR RUNNING BOND PATTERN. ANCHORS ARE TO BE SPACED AT QUARTER POINTS (I.E. 6" - 12" - 6").

MAKE CERTAIN THAT ALL CLIP ANCHORS ARE TRUE AND LEVEL, AND THAT ALL ANCHORS ARE VERTICALLY PLUMB.



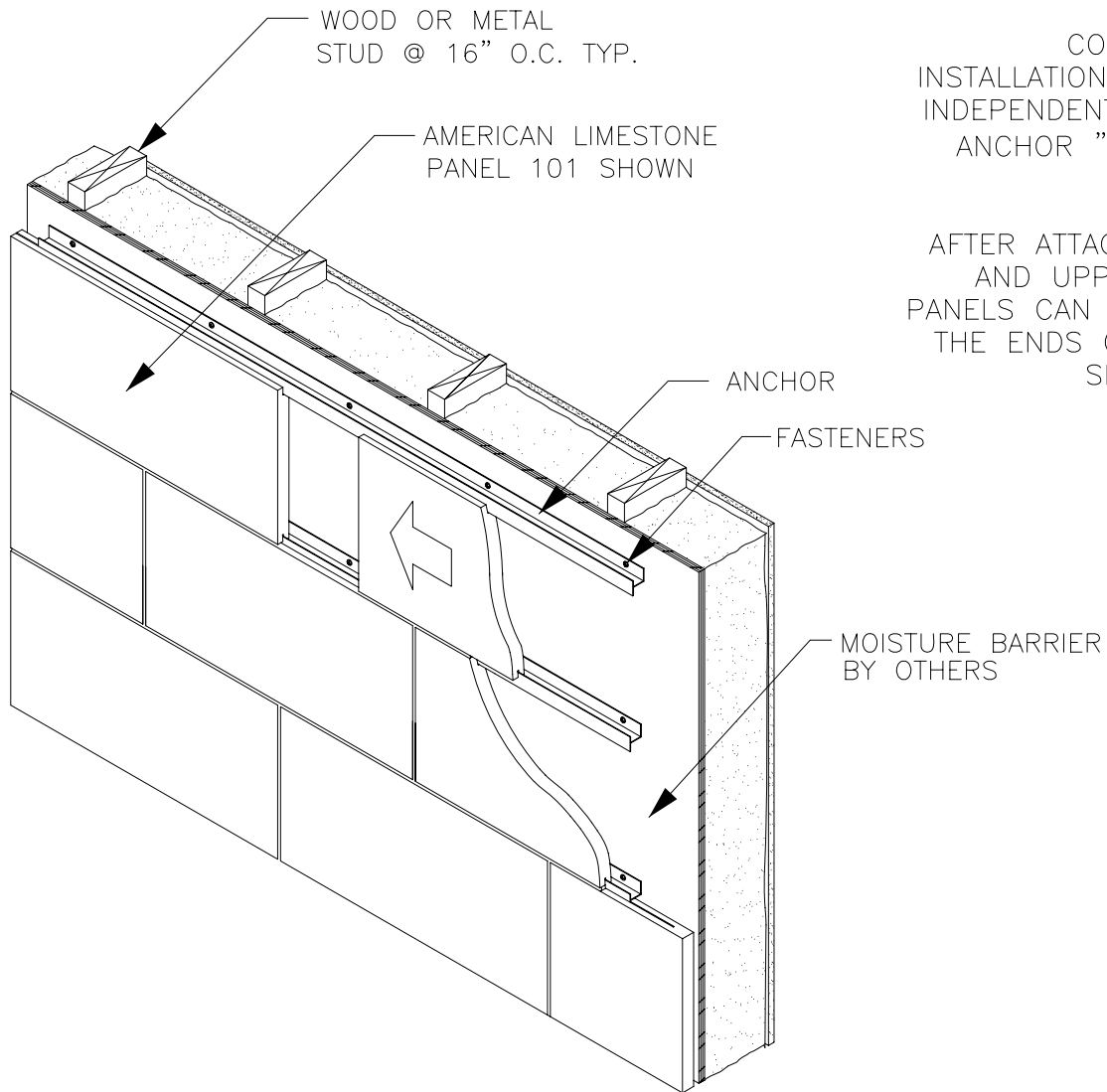
COMMONLY, THE CLIP METHOD OF INSTALLATION REQUIRES THE SETTING OF STONE AND ANCHORS SIMULTANEOUSLY. WHEN SECURING THE ANCHOR CLIPS TO THE TOP OF THE PANEL, MAKE CERTAIN TO MAINTAIN THE CORRECT VERTICAL SPACING. THIS SHOULD ALLOW 1/4" FROM THE TOP EDGE OF THE PANEL TO THE TOP OF THE ANCHOR WEB (3/16" TO THE BOTTOM OF THE WEB).

**AMERICAN LIMESTONE COMPANY**  
A TEXAS CORPORATION  
WWW.AMERICANLIMESTONE.COM  
INFO@AMERICANLIMESTONE.COM

CLIP ANCHOR INSTALLATION

**3.2.3**

# CONTINUOUS ANCHOR INSTALLATION



CONTINUOUS ANCHOR INSTALLATION ALLOWS FOR THE INDEPENDENT INSTALLATION OF ANCHOR "RAILS" AND STONE ELEMENTS.

AFTER ATTACHMENT OF LOWER AND UPPER ANCHORS, THE PANELS CAN BE INSERTED INTO THE ENDS OF THE RAILS AND SLID INTO POSITION.

FASTENER HOLES SHOULD BE DRILLED NO MORE THAN 16" OC AND CENTERED IN THE "V" GROOVE PROVIDED. FASTENER TYPE AND REQUIREMENTS SHOULD BE CONFIRMED USING THE ANCHOR LOADING TABLES IN THE ALC SOLUTION MANUAL (SEE P.3.1.3 AND 3.1.3A) OR PER AN ENGINEER'S RECOMMENDATIONS.

FASTENERS SHOULD BE LOCATED NO LESS THAN 4" FROM THE END OF THE RAIL.

DURING A CONTINUOUS ANCHOR INSTALLATION, IT MAY BE NECESSARY OR DESIRABLE TO COMBINE BOTH CLIP AND CONTINUOUS TYPES OF INSTALLATION TO ACCOMMODATE SPECIFIC JOBSITE CONDITIONS (SEE P.3.2.3).

**AMERICAN LIMESTONE COMPANY**

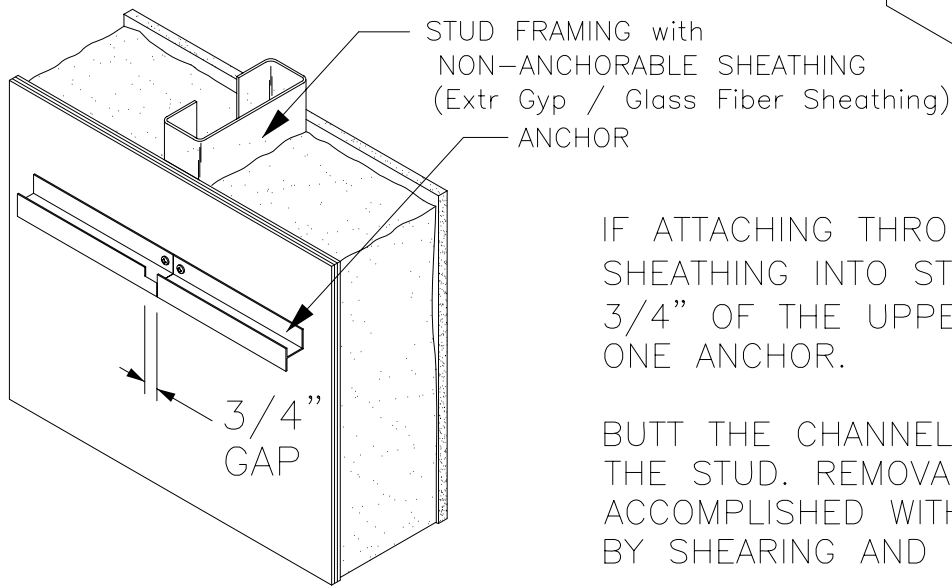
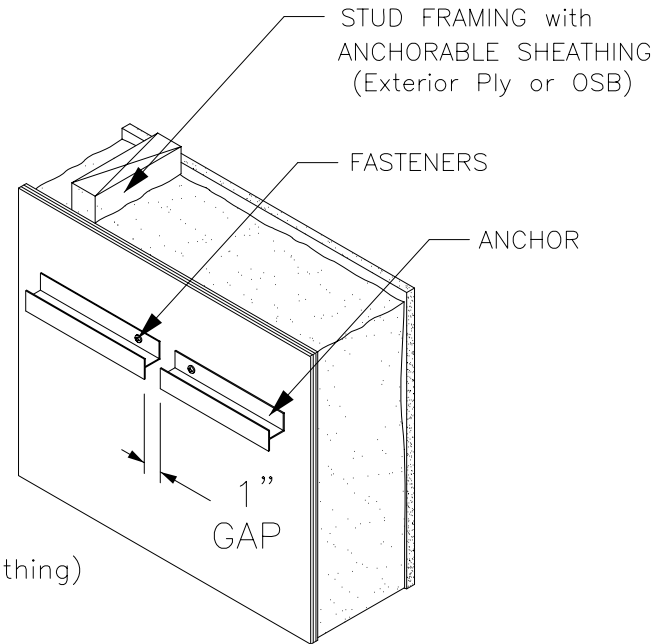
A TEXAS CORPORATION  
 WWW.AMERICANLIMESTONE.COM  
 INFO@AMERICANLIMESTONE.COM

CONTINUOUS ANCHOR INSTALLATION

**3.2.4**

# CONTINUOUS ANCHOR INSTALLATION (CONT'D)

WHEN ATTACHING TO A SOLID SURFACE SUBSTRATE SUCH AS PLYWOOD, OSB, CMU, ETC., RAILS SHOULD BE SPACED TO ALLOW FOR A 1" WEEP GAP BETWEEN THE RAIL ENDS (OR APPROX. EVERY 10 CONTINUOUS FEET).

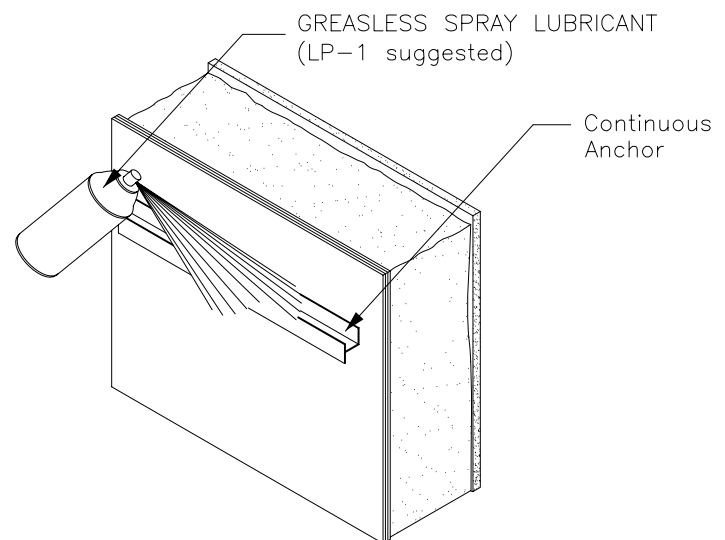


IF ATTACHING THROUGH A LOW-DENSITY SHEATHING INTO STUDS, REMOVE 1/2" TO 3/4" OF THE UPPER FLANGE AT ONE END OF ONE ANCHOR.

BUTT THE CHANNEL ENDS WHEN SECURING TO THE STUD. REMOVAL OF THE FLANGE CAN BE ACCOMPLISHED WITH EITHER A HANDSAW OR BY SHEARING AND BREAKING WITH PLIERS.

ALC RECOMMENDS THE USE OF A GREASELESS LUBRICANT (SUCH AS LPS-1 - AVAILABLE FROM TOOLING AND LUBRICATION SUPPLY FIRMS).

THE LUBRICANT SHOULD BE APPLIED TO THE WEB OF THE ANCHOR RAIL WHERE MULTIPLE PANELS WILL BE SLID INTO POSITION. THIS WILL EASE INSTALLATION AND PROTECT THE KYNAR FINISH OF THE ANCHORS FROM EXCESSIVE WEAR.

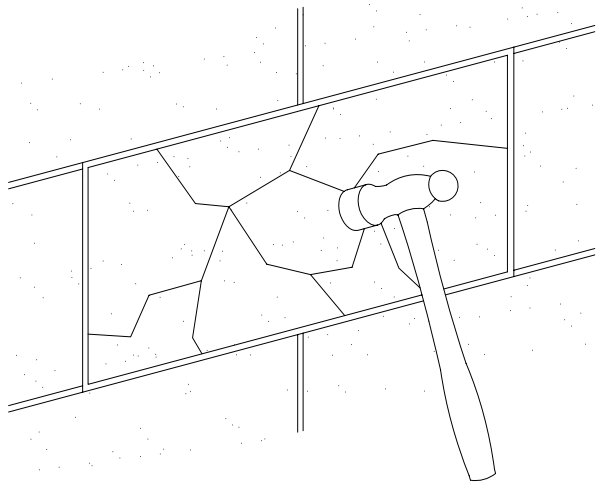
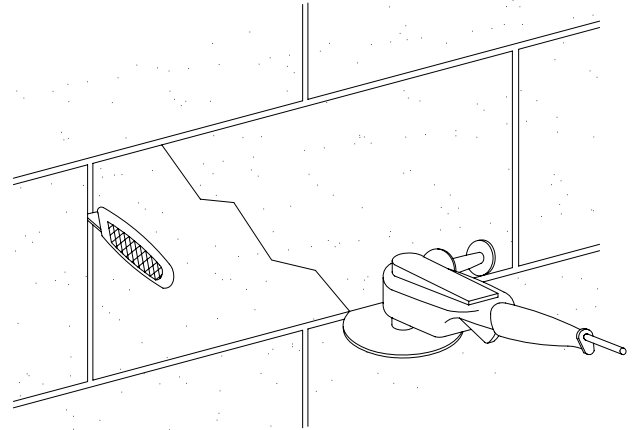


# REMOVAL OF PANEL TO BE REPLACED

REMOVE JOINT MATERIAL  
AROUND PERIMETER OF PANEL  
TO EXPOSE EDGE:

1. REMOVE SILICONE BY  
CUTTING WITH A SHARP BLADE.

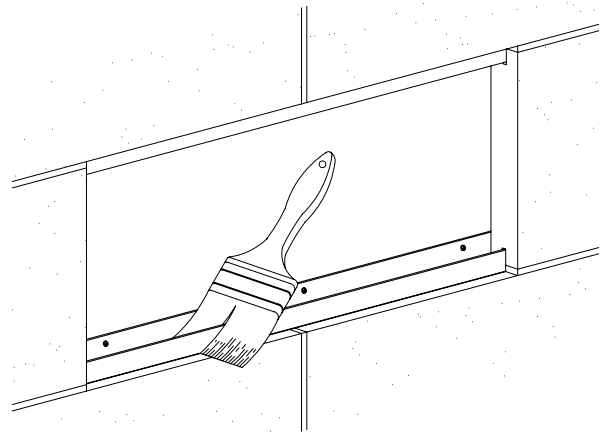
2. REMOVE MORTAR WITH A  
LIGHT CHISEL OR A CUTTING  
WHEEL.



REMOVE ANY DEBRIS FROM THE  
ANCHOR CHANNELS OR SHIM  
CAVITY.

FRACTURE THE PANEL TO BE  
REMOVED BY STRIKING IT NEAR THE  
CENTER WITH SUFFICIENT FORCE TO  
PROVIDE CRACKS EXTENDING TO  
THE OUTSIDE EDGES.

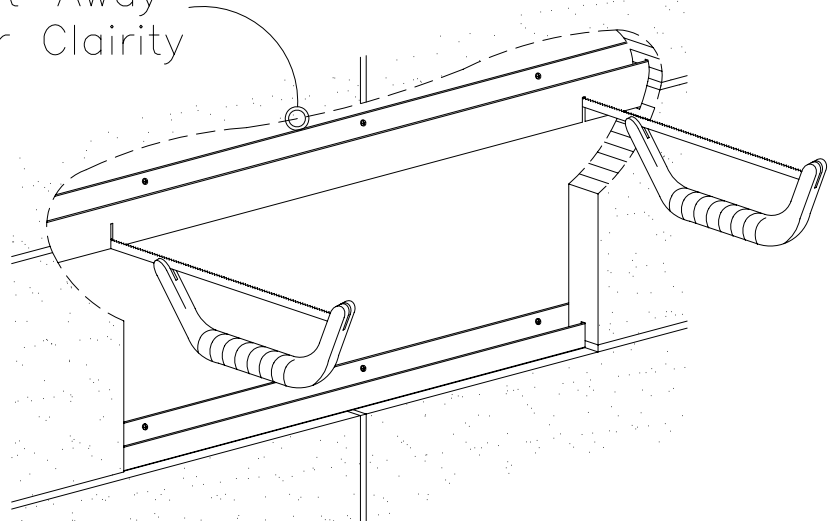
WORK THE FRACTURED PIECES  
LOOSE AND REMOVE, TAKING CARE  
NOT TO DAMAGE THE ANCHOR  
CHANNELS OR SURROUNDING  
PANELS.



# REMOVAL OF LOWER FLANGE OF UPPER ANCHOR

WITH A HACKSAW BLADE, MAKE A VERTICAL CUT (APPROX. 1/2") TO THE LOWER FLANGE OF THE UPPER ANCHOR AT EACH END OF THE PANEL OPENING.

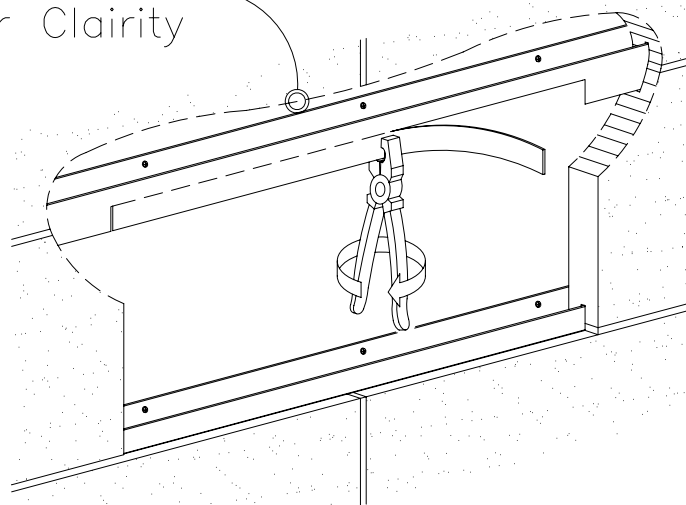
Cut-Away  
for Clairity



WITH HEAVY PLIERS, GRASP THE LOWER FLANGE NEXT TO THE VERTICAL CUT AND TWIST. THIS WILL SHEAR THE FLANGE FROM THE EXTRUSION.

REPEAT THE PROCESS TO REMOVE THE ENTIRE LOWER FLANGE ACROSS THE PANEL OPENING.

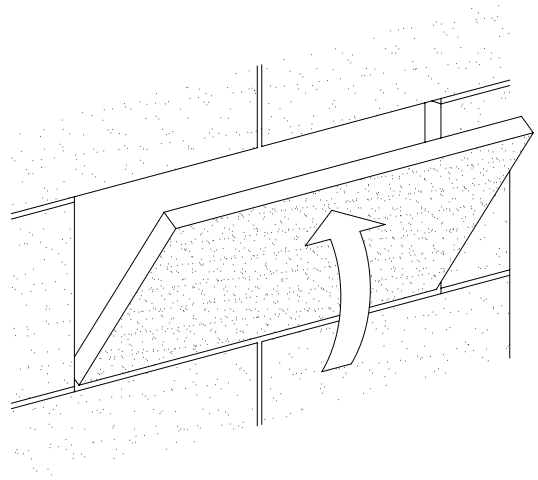
Cut-Away  
for Clairity





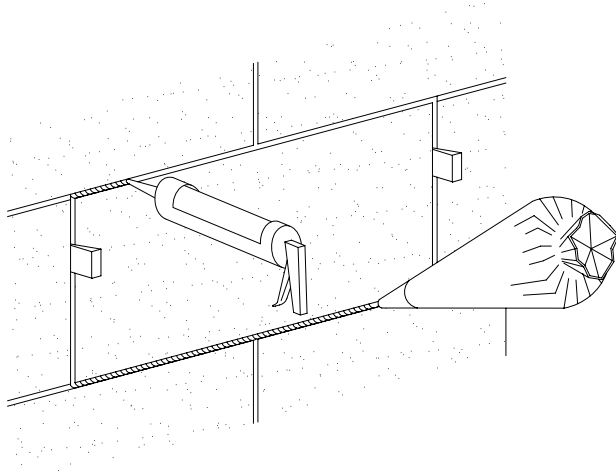
# REPLACEMENT OF PANEL

PLACE THE REPLACEMENT PANEL ONTO THE EXISTING LOWER ANCHOR, ENGAGING THE FLANGE IN THE KERF AT THE BOTTOM OF THE PANEL. ROTATE INTO PLACE.



USE TEMPORARY SHIMS OR WEDGES IN THE VERTICAL JOINTS TO POSITION THE PANEL.

WITH THE TEMPORARY SHIMS/WEDGES STILL IN PLACE, APPLY NEW GROUT OR SILICONE TO THE PERIMETER JOINTS, EXCEPT AT THE SHIMS/WEDGES.



ONCE THE JOINTING MATERIAL HAS SET AND IS STABLE, REMOVE THE SHIMS/WEDGES AND FILL THE OPEN AREAS WITH GROUT OR SEALANT.

